

About the Cover: A research team at the Shanghai Institutes for Biological Sciences has long delved into a mysterious process through which the parental genomes in a mammalian zygote lose their past-life memories to gain totipotency – DNA demethylation. Follow them to behold a surprising scenario occurring immediately after the fertilization. (Image by courtesy of Dr. XU, SIBCB)

BCAS

Vol.28 No.4, 2014
Pages 269 – 332

Honorary Editor-in-chief

BAI Chunli

Editor-in-chief

FANG Xin

Executive Vice Editor-in-chief

CAO Xiaoye

Vice Editors-in-chief

YANG Le, ZHU Daoben., TAN Tieniu, LI Ting, WANG Xingdong

Editor

GUO Haiyan

Associate Editors

SONG Jianlan

XIN Ling

Design & Layout

YUAN Miao

General Editorial Office
Tel/Fax: 86-10-62542631
Email: bulletin@mail.casipm.ac.cn
P.O. Box. 8712, Beijing 100190, China

Sponsored by the Chinese Academy of Sciences
Published by Science Press
Domestic subscription (1 year): 100 yuan; foreign subscription plus postage extra: \$72.

The views expressed in the *Bulletin of the Chinese Academy of Sciences* are those of the authors, and are not necessarily those of the Academy or the editors.

Contents



CAS reveals a drastic reform plan to restructure its 104 institutes in the hope of boosting research and collaboration efficiency.

S&T Reform

- 270 CAS Launches Drastic Reform Initiative
- 272 Teamwork Key to CAS Reform

InBrief

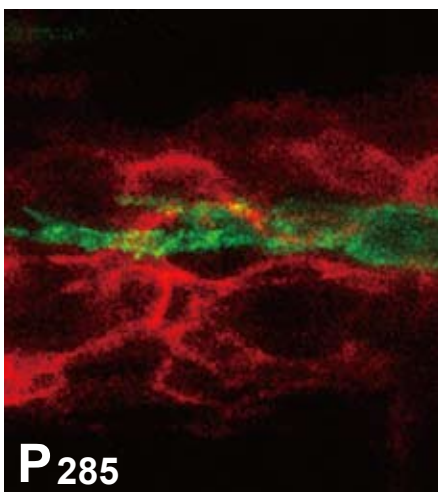
- 273 University of CAS Greet First Freshmen in History
- 274 LI Jinghai Becomes New Vice President of ICSSU
- 274 TAN Tieniu Elected into Royal Academy of Engineering
- 275 Volvo Environment Prize Goes to Chinese Climate Scientist
- 276 CAS Key Lab Approved to Launch Targeting Emerging and Highly Infectious Diseases

InFocus

- 277 Racing Deathly Ebola

Highlights

- 279 Both Mom and Dad Genomes Actively Reform Themselves: New Scenario Revealed in DNA Demethylation of Mammalian Early Embryos
- 282 Circular RNA Signals More Complexity and Diversity in Gene Expression Regulation
- 285 Identification of Multipotent Mammary Stem Cells Fueling Hope for New Targeted Therapy of Breast Cancer



P 285

CAS scientists successfully identified a multipotent type of mammary stem cells in mouse mammary gland, shedding light on targeted therapies for a refractory subtype of breast cancer.



P 292

Sustainable development is facing new challenges especially in relation to energy use. Energy economics, an emerging and rapidly developing interdisciplinary field, will play a fundamental role in efforts aimed at coping with these challenges.



P 311

Neonatal heart: Largely, postnatal coronary vessels might not have expanded from preexisting embryonic vasculature as formerly believed – see what CAS biologists revealed in page 311.

People

288 China's Spectrum Factory Gathers Momentum

Forum

- 292 Energy Economics: New Challenges and Solutions
- 296 Global Energy Reforms Call for Innovations in Energy Economics
- 297 The Future Development of Energy-Environment-Economy Integrated Assessment Modelling
- 298 Energy Finance in the Age of Big Data
- 299 Dealing with Challenges of Energy and Climate Change: Policy-oriented Researches
- 301 Construct an Open International Oil Trading Platform and Improve an Effective Energy Market System
- 302 Emergence of Unconventional Hydrocarbon Development in the United States: Global Implications on Oil & Gas Markets
- 304 Energy, Markets and Their Failures

Science Watch

Basic Science

- 306 USTC Develops the First Quantum Memory that Records Orbital Angular Momentum of a Single Photon

Life Science

- 308 Three Is Better Than Two, for Suffered Bacteria Living under Stress
- 309 Advances in phylogenetic study of Fungal Family *Boletaceae*
- 310 Robust Gene Dys-Regulation in Alzheimer's Brains
- 311 New Origin for Coronary Vessels Revealed

312 Novel Mechanism to Regulate Influenza A Virus Survival

313 CAS Structural Biologists Detail How Lipopolysaccharides Transport and Insert in Gram-Negative Bacterial Outer Membrane

315 New Technique Developed to Identify Clusters of Proteins on the Plasma Membrane of Immune Cells

317 SPOP Protein Revealed to Play a Key Role in Kidney Tumorigenesis

318 Conformational Elasticity Found to Facilitate TALE–DNA Recognition

Earth Science

319 Paleo-ecosystem Sealed in Amber: Paleobiota from Lower Eocene of Fushun, Northeastern China

321 Oxygen Escape Linked to Geomagnetic Reversals and Mass Extinctions

Environment

323 Moisture Controls Growth of Birch at Upper Timberline in Southern Himalayas

325 Scientists Establish China's Longest Tree-ring Chronology

Psychology

327 Moral Judgment and Cooperation in Children with High-functioning Autism

Technology

329 Researchers Propose AFM-based Virtual Nano-hand for Stable Nanomanipulation

331 Monitor *In Vivo* Dynamics of Avian Influenza Viruses Using Bioorthogonal-conjugated Near-infrared Quantum Dots